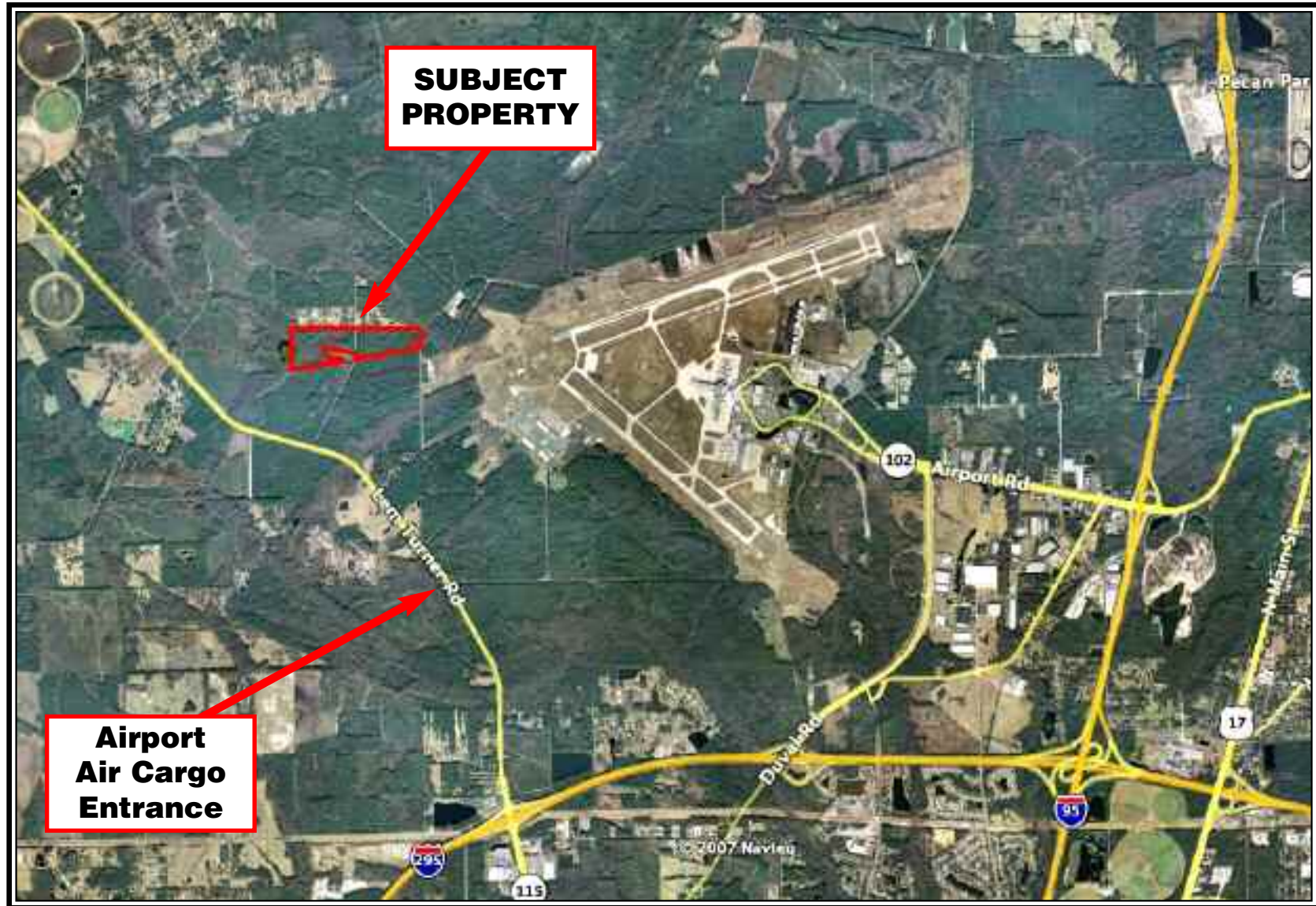


Jacksonville International Airport

Commercial Site Convenient to Air Cargo Area



Approx. 75 Acres, paved road, great location... \$1,600,000

This is a multiple page document... be sure to scroll through all pages.





An Exceptional Commercial Opportunity

75 acres with a fantastic location adjacent to the western boundary of Jacksonville International Airport featuring immediate access to I-295 and just a very short distance to I-95 and I-10

Located just around the corner from the air freight area of JAX, this property would make an excellent warehouse/distribution complex. There are no existing municipal water or sewer... and well and septic would need to be utilized. Only about 16 acres on the west portion are unbuildable

Priced to sell — \$1,600,000.



How Can The Best Property Guy Help YOU?

Simple. The Best Property Guy maintains an extensive inventory of vacant land, primarily in the southeastern United States ... from one-half acre homesites to one million acre timber tracts ... and everything in between. We also offer land in Texas, Mexico, Central and South America.

So whether you are searching for property for your dream home or you are a major developer locating property for your next development — or you represent a land investment firm looking for an appropriate land bank — we probably have the land that fits your needs.

Our inventory is so extensive that we do not have all of our land advertised that we have for sale. If you are in the market for vacant land, please call us and see how The Best Property Guy can help YOU!



Lyle Benjamin, CBR

Licensed Real Estate Agent
Charles Rutenberg Realty
255 Exec. Drive, Ste. 104
Plainview, NY 11803

Cell (917) 683-2625 Anytime

Tel. (212) 594-0636 • Fax (718) 897-4935

**Email: BestPropertyGuy@aol.com
www.TheBestPropertyGuy.com**

Got Land For Sale?

Call us! The Best Property Guy is constantly searching for land to purchase that fits our business model. Your land must be beautiful land, and it must be priced right ... If so, we are prepared to offer you a quick closing, so that we can offer the land to our extensive list of buyers at wholesale prices.

We Buy and Sell Beautiful Land at Wholesale Prices!

For more information or an
Appointment to inspect the land that's
Just right for YOU, please call

Lyle Benjamin, CBR
Land Consultant
Cell (917) 683-2625

You may call me at any reasonable hour
Weekends and holidays included

To see more beautiful land at wholesale prices, go to
www.TheBestPropertyGuy.com



Charles Rutenberg Realty

