

A Beautiful Riverfront Tract

Perfect for Rural Estate Development, Recreation or Investment...



Satilla River Shores

4 Miles riverfront, both sides

Great location - just off US Hwy 1 near Waycross in Ware County, Georgia

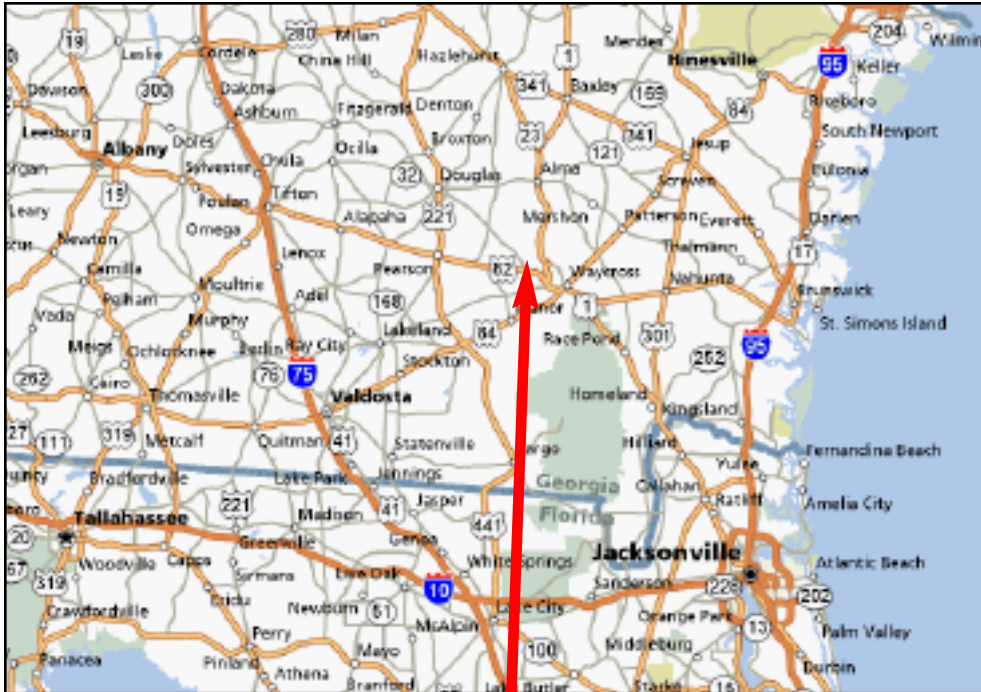
Approx. 1142 acres, \$3,400 per acre - about \$1.2 Million timber value

This is a multiple page document... be sure to scroll through all pages.

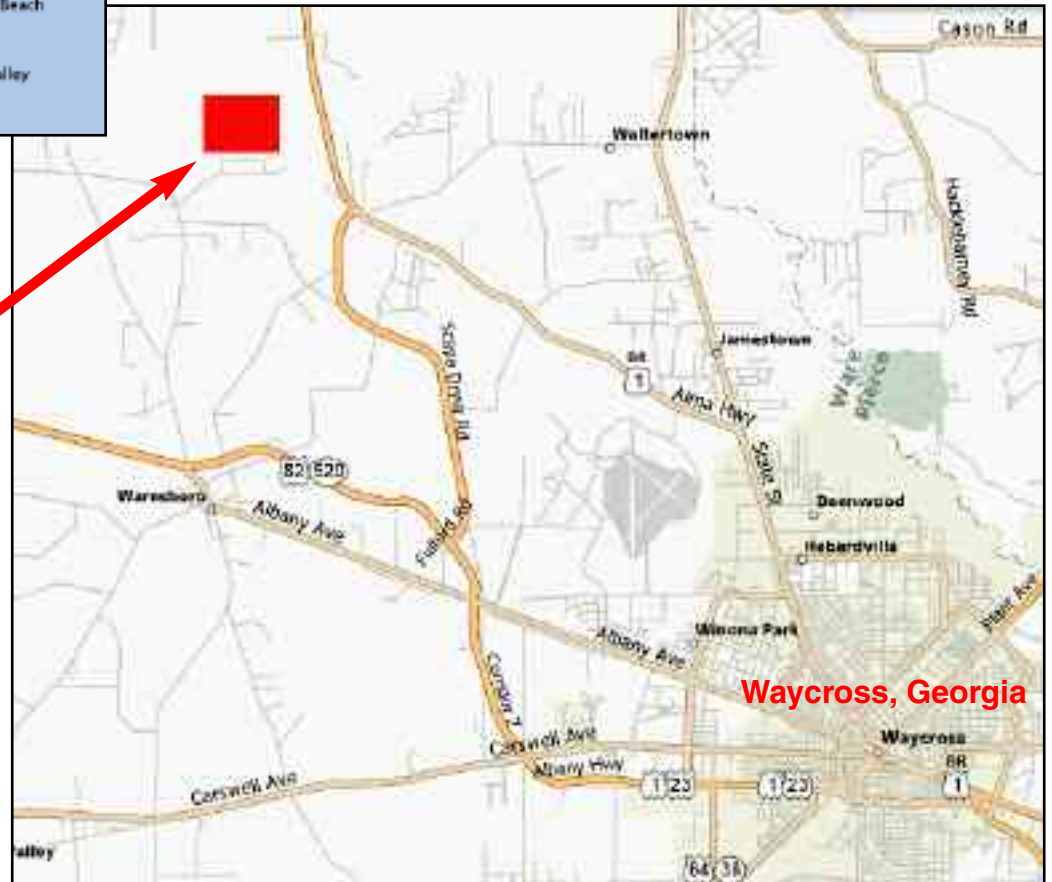


Satilla River Shores is located in Ware County Georgia, about 10 miles west of Waycross just off US Highway 1 and US Highway 82 on Pine View Road. With 4 miles of riverfront on both sides of the river, around \$1.5 million worth of timber and beautiful hardwood stands, this tract is extremely attractive at only \$3,400 per acre.

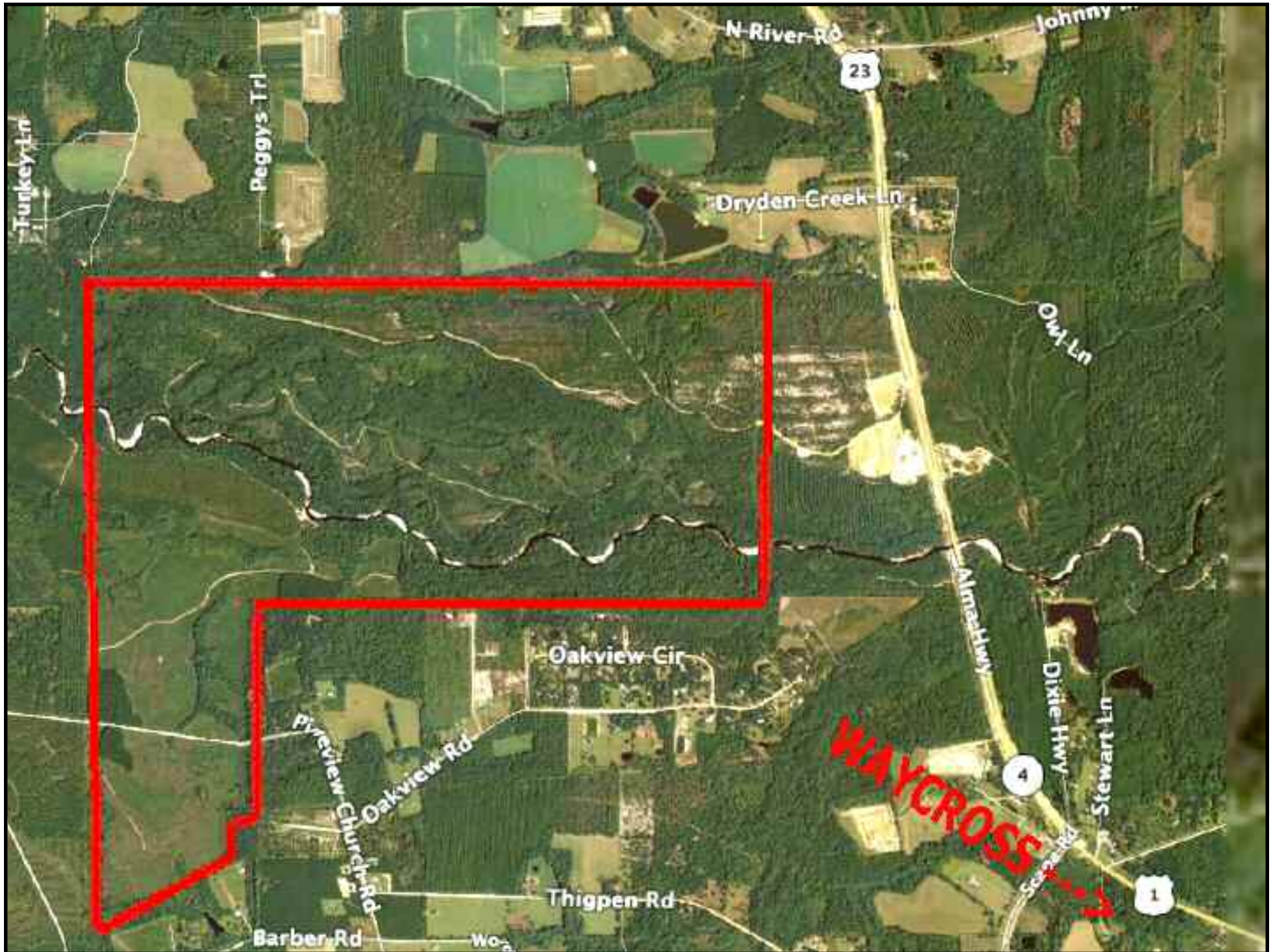
Ware County Tax Numbers 033002, 033003, 033007



Property Location



Waycross, Georgia





How Can The Best Property Guy Help YOU?

Simple. The Best Property Guy maintains an extensive inventory of vacant land, primarily in the southeastern United States ... from one-half acre homesites to one million acre timber tracts ... and everything in between. We also offer land in Texas, Mexico, Central and South America.

So whether you are searching for property for your dream home or you are a major developer locating property for your next development — or you represent a land investment firm looking for an appropriate land bank — we probably have the land that fits your needs.

Our inventory is so extensive that we do not have all of our land advertised that we have for sale. If you are in the market for vacant land, please call us and see how The Best Property Guy can help YOU!



Lyle Benjamin, CBR

Licensed Real Estate Agent
Charles Rutenberg Realty
255 Exec. Drive, Ste. 104
Plainview, NY 11803

Cell (917) 683-2625 Anytime

Tel. (212) 594-0636 • Fax (718) 897-4935

**Email: BestPropertyGuy@aol.com
www.TheBestPropertyGuy.com**

Got Land For Sale?

Call us! The Best Property Guy is constantly searching for land to purchase that fits our business model. Your land must be beautiful land, and it must be priced right ... If so, we are prepared to offer you a quick closing, so that we can offer the land to our extensive list of buyers at wholesale prices.

We Buy and Sell Beautiful Land at Wholesale Prices!

For more information or an
Appointment to inspect the land that's
Just right for YOU, please call

Lyle Benjamin, CBR
Land Consultant
Cell (917) 683-2625

You may call me at any reasonable hour
Weekends and holidays included

To see more beautiful land at wholesale prices, go to
www.TheBestPropertyGuy.com



Charles Rutenberg Realty

